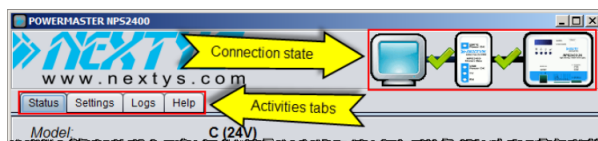


POWERMASTER

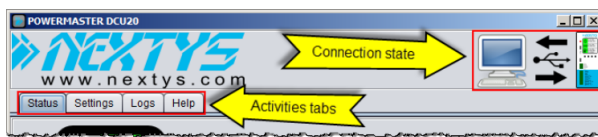
Is a software tool used to configure and monitor the operation of the following products:

- ✓ NPS2400: Advanced 3 phase 2400W DIN rail power supply
- ✓ DCU20: CPU controlled 12/24V – 20A DC UPS

for NPS2400



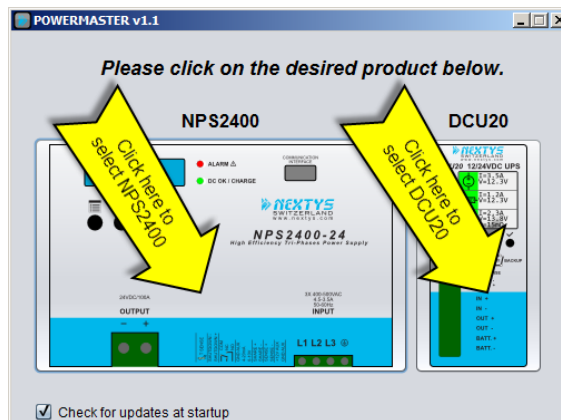
for DCU20



With POWERMASTER the user can:

- ✓ Monitor the device status.
- ✓ Update the firmware.
- ✓ Read and write the device configuration.
- ✓ Read and write the configuration from/to a file.
- ✓ Read the logs.
- ✓ Read and write the logs from/to a file



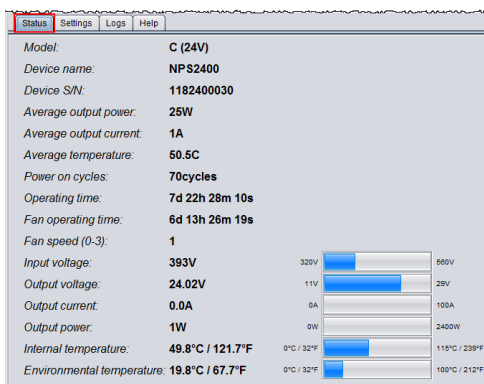


Start-up screen

For reference only

SCREEN SHOTS

NPS2400



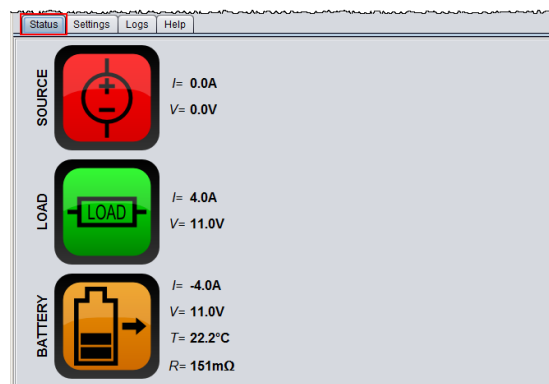
NPS2400 - Status

NPS2400 - Settings



NPS2400 - Help panel

DCU20



DCU20 - Status

DCU20 - Settings



DCU20 - Help panel